



# MONTHLY MEMBERSHIP PROGRESS REPORT

District 25 C

Results as of: 06/30/2018

GMT: STEVE ANTON

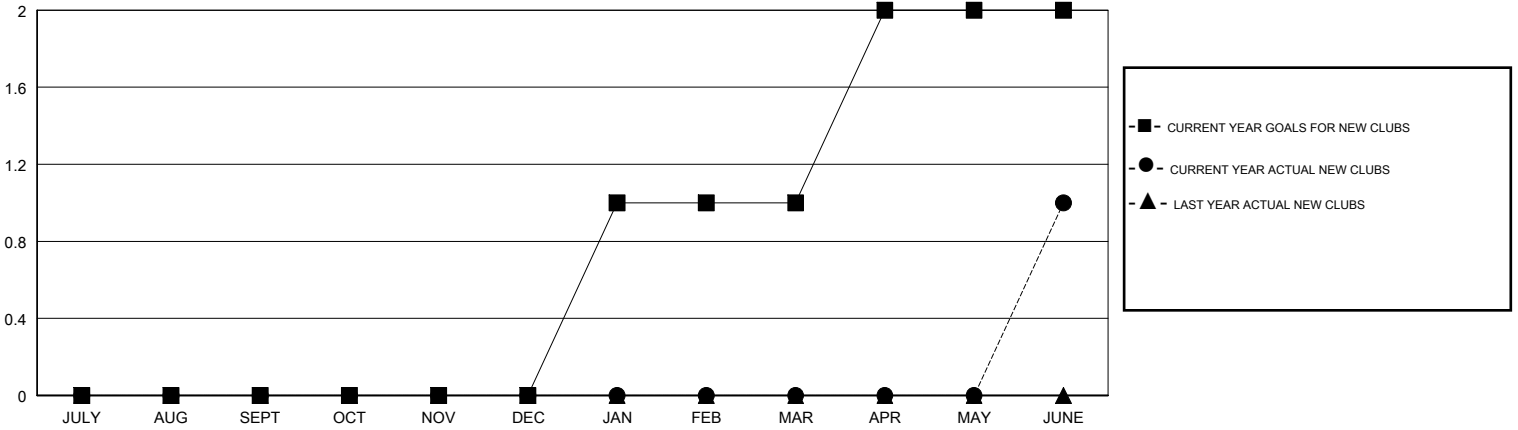
LOCATION INDIANA

GMT CA

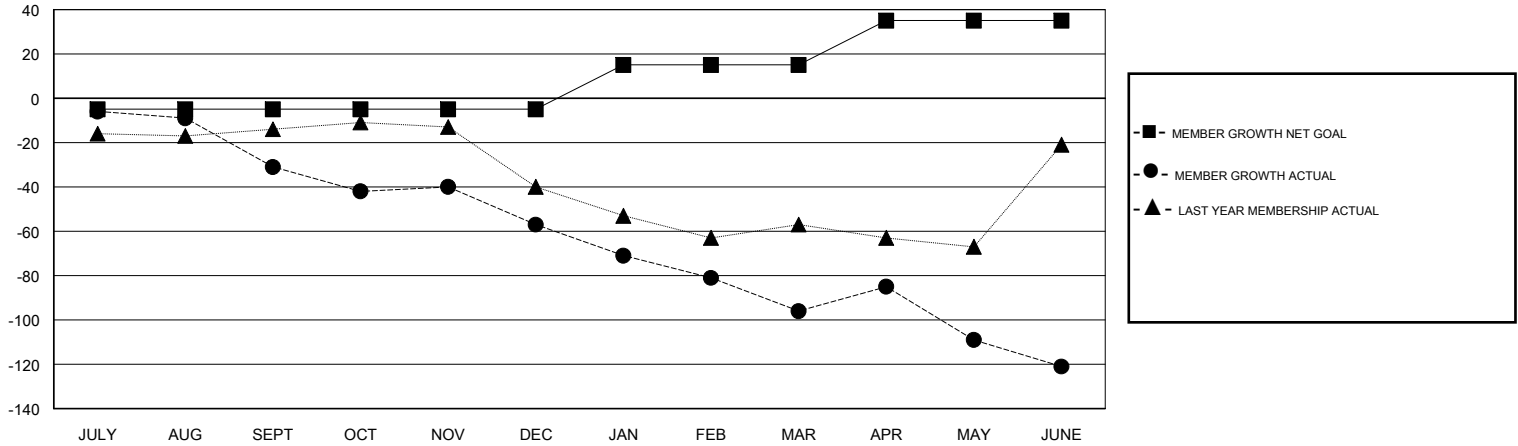
Clubs			
RESULTS FOR 2017-2018			
QUARTER	NEW CLUB GOAL	NEW CLUBS	DROPPED CLUBS
JULY/AUG/SEPT	0	0	0
OCT/NOV/DEC	0	0	1
JAN/FEB/MAR	1	0	1
APR/MAY/JUNE	1	1	0

Members			
RESULTS FOR 2017-2018			
QUARTER	MEMBER GROWTH NET GOAL	MEMBER GROWTH ACTUAL	DROPPED MEMBERS ACTUAL (including transfers)
JULY/AUG/SEPT	-5	18	47
OCT/NOV/DEC	0	22	42
JAN/FEB/MAR	20	21	56
APR/MAY/JUNE	20	79	98

GOALS AND ACTUAL NEW CLUBS CUMULATIVE



GOALS AND ACTUAL MEMBERS CUMULATIVE



DROPPED CLUBS: 2	33 CLUBS OF 58 ADDED 1 OR MORE NEW MEMBERS	<u>GENDER DISTRIBUTION</u>	
DROPPED MEMBERS		MALE	1,063 (71.82%)
DECEASED	31	FEMALE	417 (28.18%)
CLUB CANCELLED	0	Women Percentage Fiscal Year Goal: 29%	
OTHER	212	TOTAL FAMILY UNIT MEMBERS	0
TOTAL	243	FAMILY MEMBERS PAYING HALF DUES	0

[CLICK HERE FOR CUMULATIVE MEMBERSHIP DATA](#)